

Explore. Discover. Connect.



From trial operations to evidence generation, move further and faster with the industry's most comprehensive source of real-world data.

Who We Are

TriNetX is a global network of healthcare organizations and life science companies, driving real-world research to accelerate the development of life-saving therapies.

What We Do

We put the power of real-world data into your hands to improve protocol design, streamline trial operations, and enrich evidence generation.

Trial Optimization

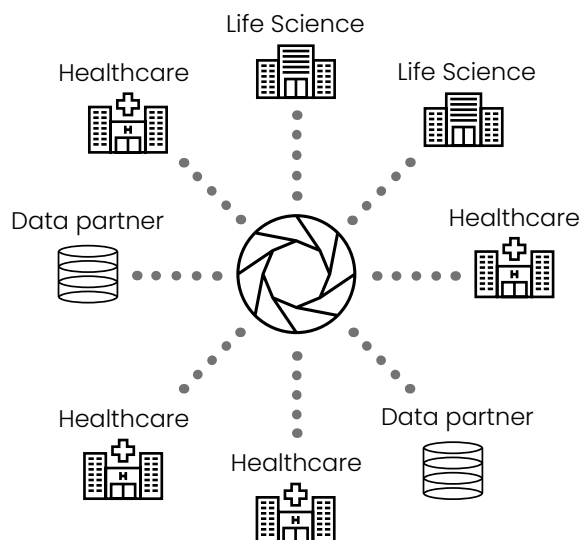
- Study Design and Feasibility
- Site Selection
- Patient Identification

Evidence Generation

- Health Economics and Outcomes Research
- Comparative Safety and Effectiveness
- Treatment Patterns
- Value Analysis

Leading with Data

TriNetX aggregates and harmonizes clinical data from around the world over a federated network, to give you real-time answers based on rich, longitudinal records.



NAVIGATE A WORLD OF DATA

EHR | TUMOR REGISTRIES GENOMIC DATABASES | CLAIMS

Linked and harmonized to common terminologies for in-depth analysis

250M+
patient records

120+
healthcare organizations providing continuous, comprehensive, up-to-the-month data

19
countries in North and South America, EMEA, and Asia-Pacific, including Japan

40B+
date- and patient-indexed clinical observations available for download

122
lab results in the typical record of U.S. and EMEA patients



87.4%

Solutions to Meet Your Challenges

TriNetX is committed to helping you unearth insights that will lead to better patient care and treatment options. How you get there depends on your challenge.

Platform

Connect directly with patients' healthcare organizations

- Build patient cohorts with a powerful UI
- Explore clinical characteristics
- Compare outcomes
- Uncover treatment pathways
- Calculate incidence and prevalence
- Send trial opportunities to patients' healthcare organizations, who can re-identify the patients in your cohort for accelerated enrollment

Datasets

Downloadable patient-level facts for deeper analysis

- De-identified for HIPAA compliance
- Pseudonymous patient ids for longitudinal analysis
- Observations, including lab values, tied to dates and encounters
- Claims data for the full patient journey
- Universal format (linked CSV files)
- Easy to import into your database

Consulting

Make the most of our data

- Synthetic control arms
- Chart reviews
- Research projects
- Expert guidance on our platform and datasets

Always a Tailored Approach

We've helped organizations of all size, shape, and therapeutic focus to design better studies and gather real-world evidence. Connect with us to partner on a customized solution that meets your needs and protects your budget.

GET ANSWERS ON DEMAND

Our web-based platform puts hundreds of millions of patient records at your fingertips for rapid cohort selection, analysis, and study enrollment.

E11 - Type 2 diabetes mellitus

first diagnosed in the last year, at age ≥ 40

AND

N18 - Chronic kidney disease

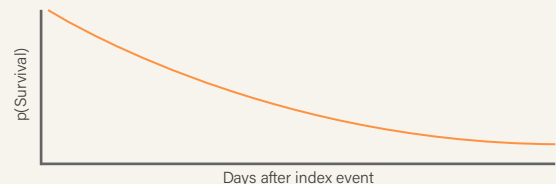
first diagnosed within 6 months of T2DB

Define your cohort.

9037	Hemoglobin A1c	7.37 ± 1.86
9038	Lutropin [Units/volume]	12.3 ± 15.2
9039	Parathyroid.intact [Mass/volume]	135 ± 177
9040	Thyrotropin [Units/volume]	3.55 ± 22.4
9041	Thyroxine (T4) [Mass/volume]	7.23 ± 2.88

Explore characteristics.

Time to Renal Failure



Analyze and compare outcomes, reveal treatment pathways, and more.



Are you interested in a Phase III trial opportunity in Chronic Kidney Disease with Activate Bio?

Your eligible patients
80

First patient first visit
Jan 2022

Invite the healthcare organizations who provide our data to participate in your study. If your cohort includes patients drawn from their institution, they can re-identify them.